

Essure Procedure

In Office Sterilization Procedure
Oakdale Obstetrics & Gynecology, PA

Little Known Facts

- Women ages **40-44** have been reported to have the second highest rate of unintended pregnancies in the US.
- **53%** of unintended pregnancies have been reported to occur in women using some form of contraception.
- Statistics show that women who want two children spend roughly three decades trying to avoid pregnancy.

Current permanent birth control options

- Vasectomy
- Tubal Ligation
- Essure



Comparisons

	Essure® Procedure	Tubal Ligation	Vasectomy
Incisions/ punctures	None	1-2	1-2
Typical anesthesia	Local	General	Local
Average # of days to resume normal activities	<1	4.4	2
Effectiveness (based on 5 years of follow-up)	99.80%	99.16%	99.85%



Essure® Overview

*The only non-
incisional option
for permanent
birth control*

Hysteroscopic Placement

- Very small (5 mm) camera inserted through the cervix, allowing visualization of the tubes
- Micro-inserts threaded through the camera into the fallopian tubes
- Done under local anesthesia with minimal discomfort (not much more than a pap smear)

Essure® Micro-insert

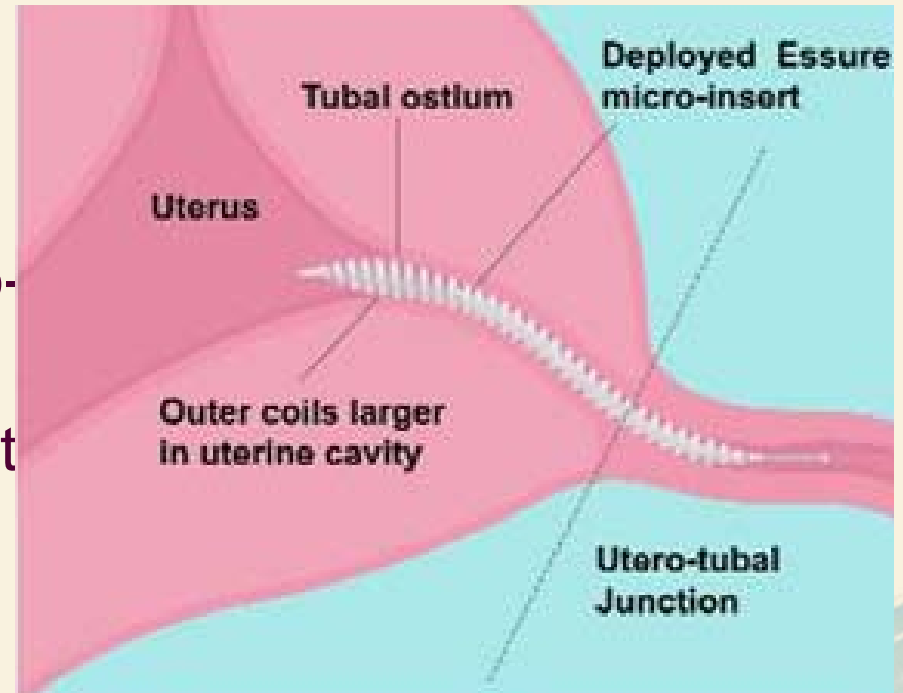
- Soft and flexible
- Made from materials that have been used successfully for decades in medical procedures such as heart and other surgeries
- Do not contain or release hormones



Photograph property of Conceptus Incorporated

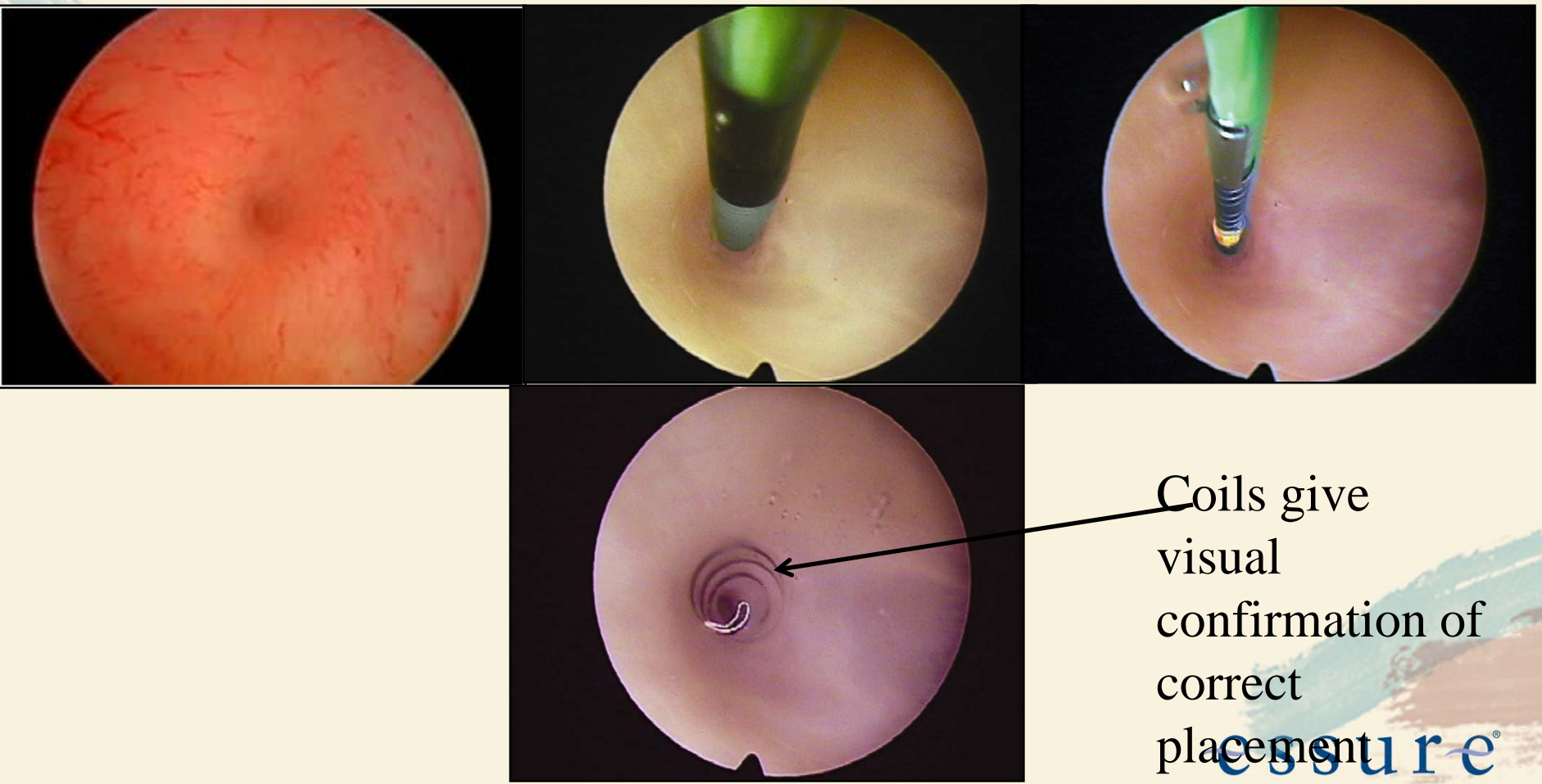
Mechanism of action

- Micro-insert placed into each fallopian tube
- Tissue ingrowth occurs in and around the micro-insert
- Essure confirmation test verifies occlusion at 3 months post-placement





Micro-insert Placement Steps

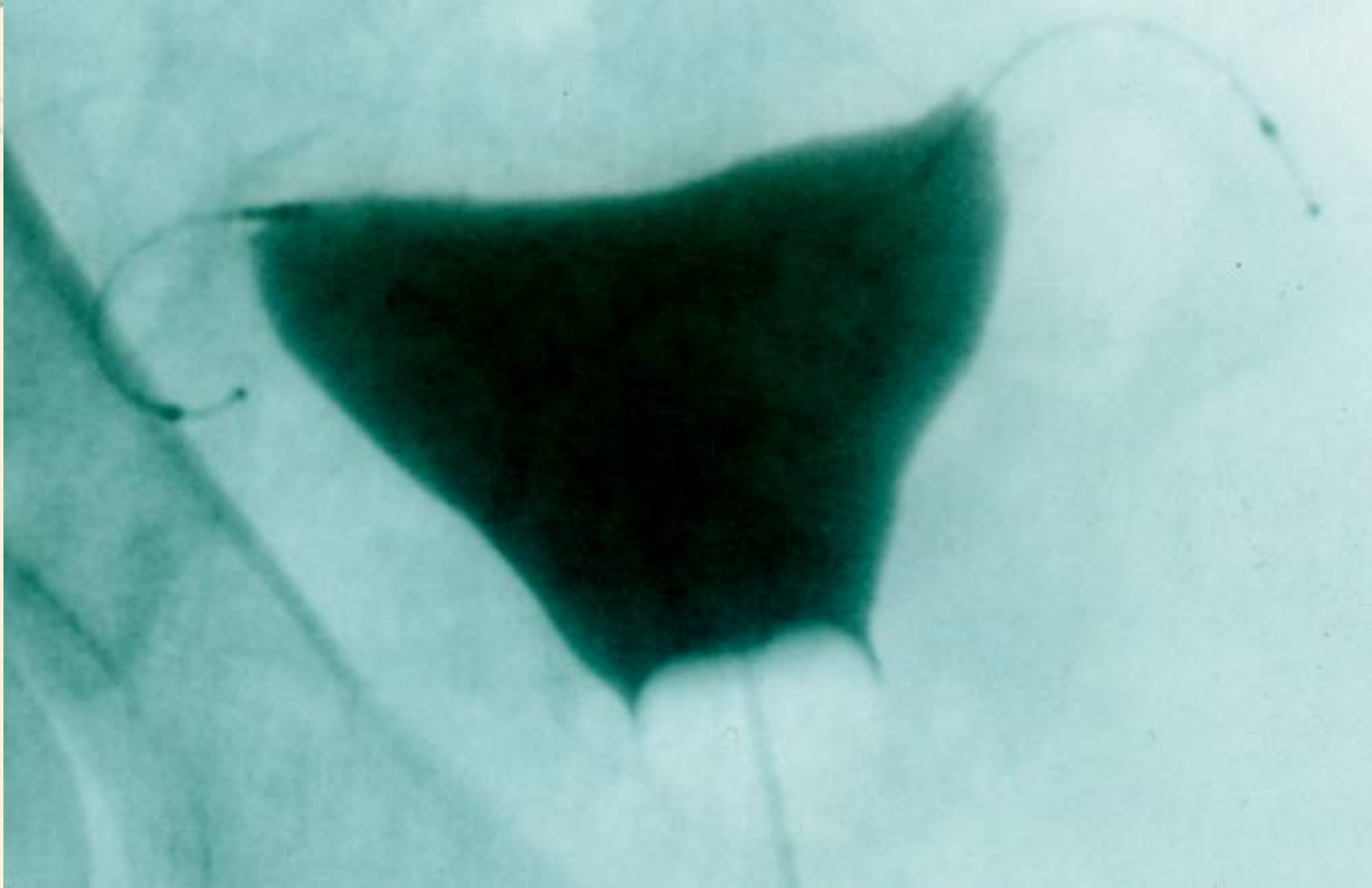


Coils give visual confirmation of correct placement

Essure Confirmation Test

- Performed at 3 months following procedure to confirm tubes are blocked
- Hysterosalpingogram: Radiological study to examine the tubes and ensure the coils are in place and working

Essure Confirmation Test



re[®]

YOUR FUTURE IS COMPLETE.
YOUR CHOICE IS CLEAR.™

Essure® Procedure - Benefits

- No cutting, therefore no scars
- Does not require general anesthesia
- Quick procedure – approximately 30 min
- Fast recovery
 - Most women go home about 45 minutes or less, after the procedure
 - Most women return to normal activities within 1 to 2 days (most within 24 hrs)

Essure® Procedure - Benefits

- 99.80% effective at preventing pregnancy (based on 5 yrs of follow-up)
- Hormone free
- Does not affect intercourse, normal hormonal rhythms, or periods
- High patient satisfaction

Essure® Procedure - Risks

- Perforation, expulsion, or other unsatisfactory location of the micro-insert leading to a second procedure or surgery
- Pain, cramping, vaginal bleeding, menstrual pattern changes
- Nausea/vomiting or fainting during procedure

Essure® Procedure – Important Considerations

- The Essure® procedure is not reversible
- Like all methods of birth control, the procedure should not be considered 100% effective
- Not all women who have the Essure procedure will be able to have both micro-inserts placed
- Patients must use another form of birth control for at least 3 months after the procedure
- Removal of the micro-inserts requires surgery

ESSURE SUMMARY

- No Incisions
- No General Anesthesia
- Minimal Time Commitment in Office
- Fast Recovery- Hours vs Days
- Covered by Most Health Plans
 - Office Copay
- Essure Information Center 1-877-5ESSURE,
or www.essure.com